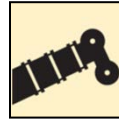


# XCA60\_E / All Terrain Crane

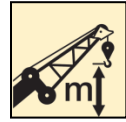
## Basic technical specifications



60 t



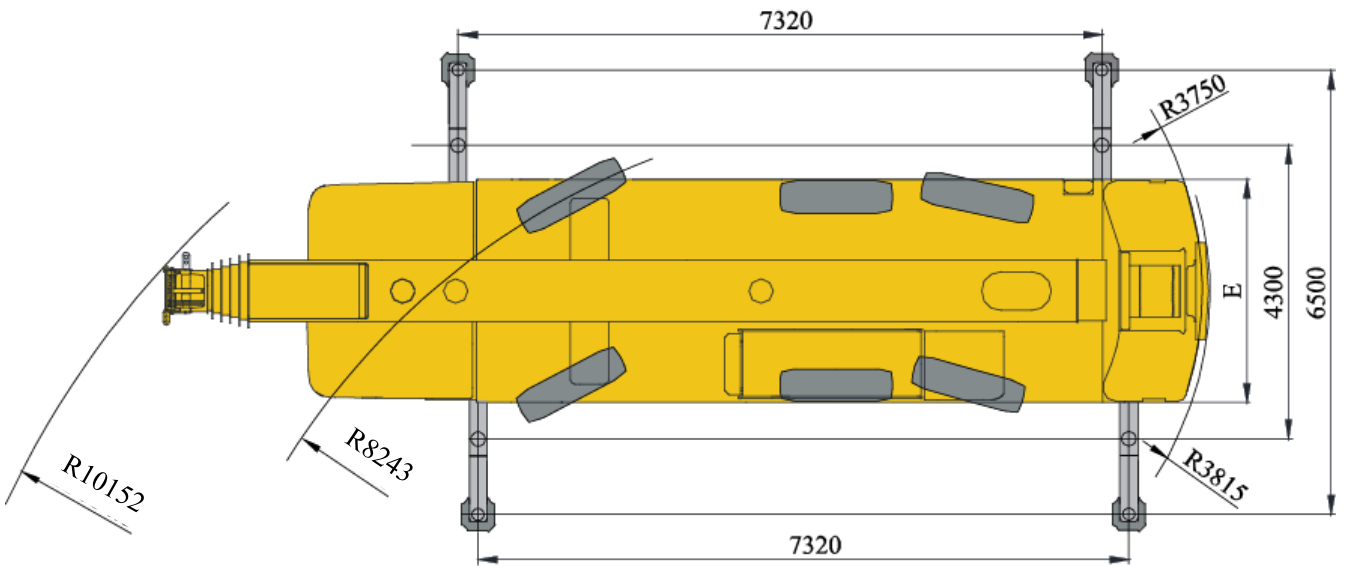
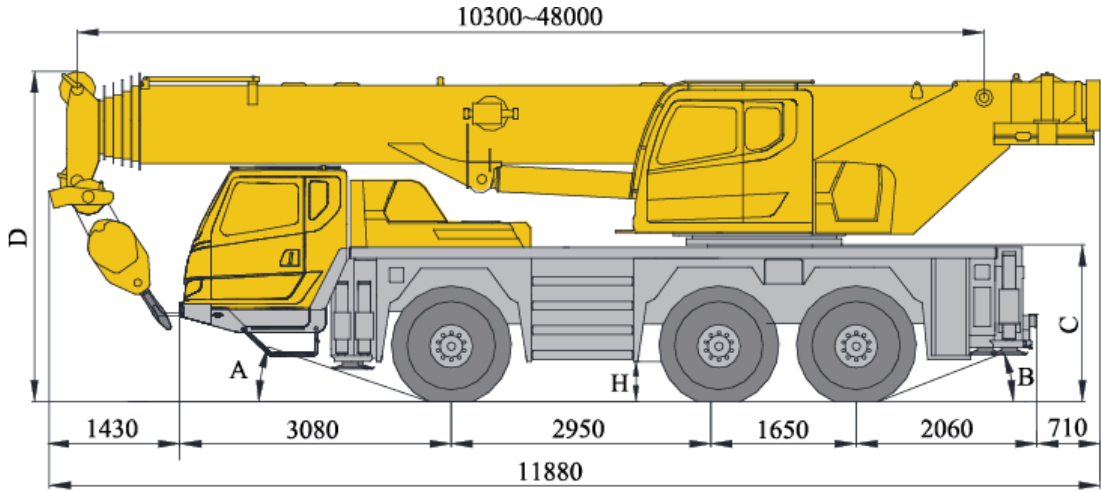
48 m



63 m



# Dimensions



	A	B	C	D	E	H
385/95 R 25 ( 14.00 R 25 )	19°	21°	1750mm	3755mm	2550mm	330mm
445/95 R 25 ( 16.00 R 25 )	20°	23°	1800mm	3805mm	2550mm	380mm
525/80 R 25 ( 20.5 R 25 )	20°	23°	1800mm	3805mm	2700mm	380mm

## Technical specifications



### Chassis

<b>Frame</b>	Designed and manufactured by XCMG, made of high strength steel with inverted trapezium cross-section.
<b>Outrigger</b>	H-type outrigger, outrigger beam is one-stage telescoping with push-pull outrigger float and two telescoping working position (fully-extended and half-extended) to satisfy various working condition requirements. Outrigger control panel is controlled by CAN bus located on the sides of chassis.
<b>Engine</b>	Daimler AG OM470LA, 6 cylinders, diesel. Rated power/rpm: 280 kw /1700 rpm. Max. output torque/rpm: 1900 N.m /1300 rpm. Emission standard: EU Stage IV/EPA Tier 4f. Fuel tank capacity: 260 L.
<b>Transmission</b>	American Alison automatic transmission with 6 forward gears and 1 reverse gear.
<b>Axles</b>	High strength divided axles with independent suspension. Three axles for driving: 6×6×6.
<b>Suspension</b>	With advanced independent suspension technology, the right and left tires can move independently to improve the drive smoothness. The suspension is equipped with effective damped cylinder and accumulator buffer ; fixed on the frame, the main reducer can rise and fall with the frame to greatly improve the passing ability of vehicle. The stroke of suspension cylinder : -110mm ~ +110mm.
<b>Tyres</b>	Tyre specifications: 385/95 R25(14.00R25.)
<b>Steering</b>	Axle 1 mechanically steering and axles 2, 3 electric-hydraulic proportional steering.
<b>Brakes</b>	Service brake: double-circuit air pressure brake, acting on all wheels. Parking brake: spring-loaded brake, acting on the wheels of axles 1, 2 and 3. Auxiliary brake: engine retarded brake.

**Driver's cab** New type steel structure full dimension cab with suspension connecting structure, and there is shock absorber fitted at the rear of the cab, equipped with adjustable seats, safety glass of electrically operated door window lift , electric-adjustable mirrors, steering wheel adjustable in height and angle, large screen liquid crystal display. New type of combined control panel is reasonably and ergonomically arranged in arch shape. Heater, air conditioner and radio receiver are standard.

**Electrical System** DC 24 volts is in series with two 12-volt battery packs.



### Superstructure

**Frame** Designed and manufactured by XCMG, made of high-strength steel.

**Hydraulic system** The load-sensing plunger pump and gear pump driven are used to control hoisting, elevating, telescoping, slewing and auxiliary system. Load-sensing proportional multi-way valve is equipped. Air-cooled hydraulic radiator is also applied.

**Operating mode** Pilot electric proportional control is adopted with distributed CAN bus control technology. Apart from the normal control functions, it also has the functions of real time monitoring, automatic fault diagnosis, intelligent boom control, function self-adaptability and single cylinder pinning control.

**Main winch system** Hydraulic motor with planetary gear reducer and constant-closed brake, specific anti-disorder rope winding drum, anti-coiling wire rope.

**Slewing system** Single-row four-point ball contact external tooth slewing ring and driven by a hydraulic motor, with a planetary gear reducer and a normally closed brake equipped, for 360° continuous rotation. Power control and free slewing function as well as stepless speed regulation are available.

## Technical specifications

<b>Operator's cab</b>	The cab is ergonomically designed for safety and comfort. It is equipped with safety glass and protective grilles. Windshield sun shade, a sliding door and an adjustable seat are available. The cab can be tilted up to 20°. Heating & air conditioning are available.
<b>Safety devices</b>	Hydraulic balance valve, hydraulic relief valve, hydraulic two-way valve, LMI, display, central controller, length/angle sensor, oil pressure sensor and spring centering system for control levers. Lowering limiter for preventing wire rope from over-releasing. Anti-two block at boom head for preventing wire rope from over-winding. Anemometer for measuring the wind velocity.
<b>LMI</b>	The safety protection device is installed in operator's cab. When actual moment approaches overload value, it may send out visual alarm, and automatically stop dangerous movements before overloading. Overload memory function (black box) and fault self-diagnosis function are available.
<b>Combined counterweight</b>	Total weight is 12t. 7 counterweight combinations of 0t, 2.1t, 2.7t, 3.4t, 4.5t, 7.6t and 12t are available.
<b>Electrical System</b>	24 V DC



### Boom system

<b>Boom</b>	6-section, U-shape cross section, welding structure. Single-cylinder pinning interlocked telescoping system. 46%, 92% and 100% telescoping pattern are available. Boom length: 10.3m ~ 48m.
<b>Single top</b>	Fitted at boom head, used for single line operation.
<b>Fixed jib</b>	Lattice welding structure, with 0°, 15° and 30° jib offset angles available. Jib length: 9.2m ~ 16m.

### Additional equipment

<b>Independent jib head</b>	2.5 m, may be installed on the tip of boom for lifting operations.
<b>Auxiliary devices</b>	Variable-focus wireless camera at boom head, rotating working lamp, cold weather starting device and beacon lamp.
<b>Operating system</b>	Wireless remote control device
<b>Tyres</b>	Tyre specifications: 445/95 R25(16.00 R 25), 525/80 R25(20.5 R 25).
<b>Auxiliary brake</b>	Eddy current retarding brake

**Product parts details** As mentioned above, please refer to the product quotation for specific parts.

## Weight






Axle	1	2	3	Total weight
t	12	12	12	36







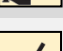
Hook	No. of lines	Weight kg	Remarks
60 t	12	560	Single hook
35 t	7	305	Single hook
15 t	3	235	Single hook 选 optional
5t	1	100	Single hook

## Working speeds

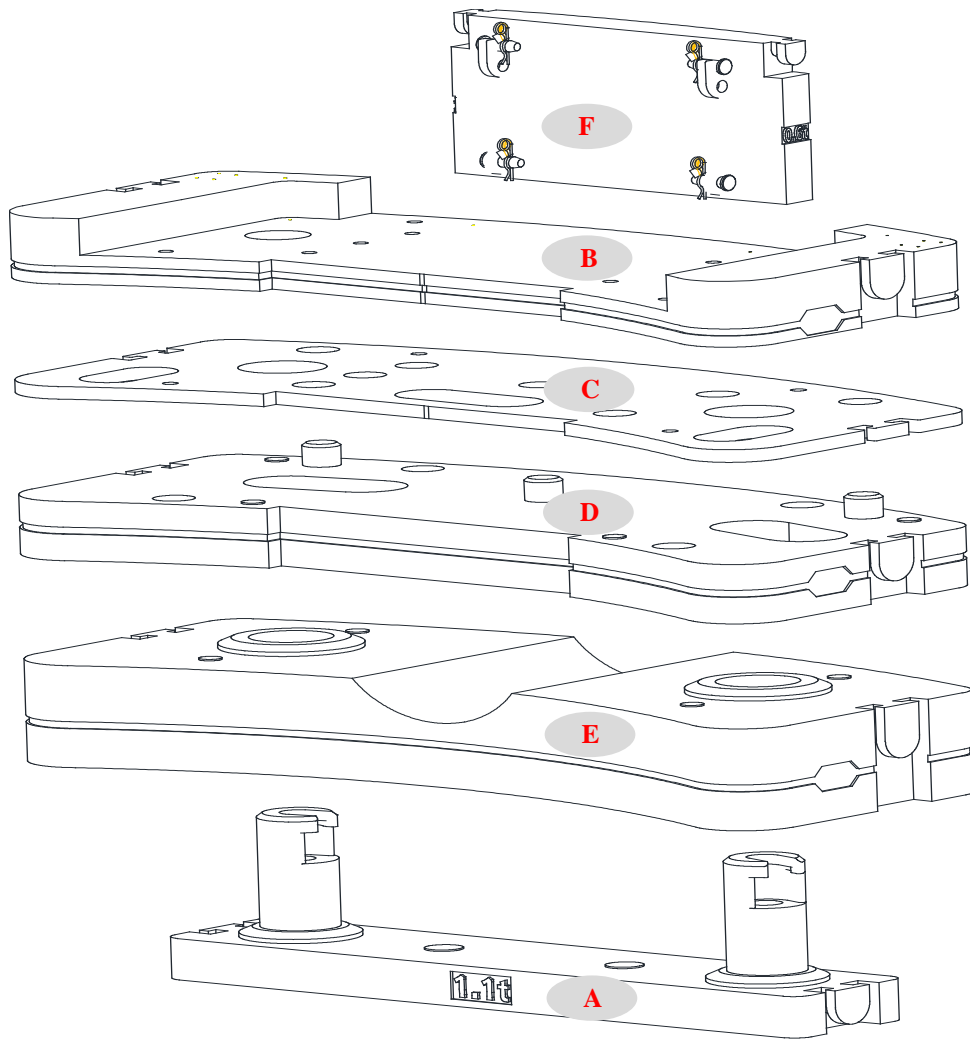


		
385/95 R 25 ( 14.00 R 25 )	3~85	70%
445/95 R 25 ( 16.00 R 25 )	3~85	63%
525/80 R 25 ( 20.5 R 25 )	3~85	63%



Drive	Working speed	Max. single line pull	Rope diameter/ length
	0-135 m/min, single line,4th layer, no load	50KN	18 mm/208 m
	0-135 m/min, single line,4th layer, no load	50KN	18 mm/140 m
	0-1.5 r/min		
	Approx. 38s for boom elevation from -1° to 81°		
	Approx. 310s for boom extension from 10.3m to 48m		

# Counterweight

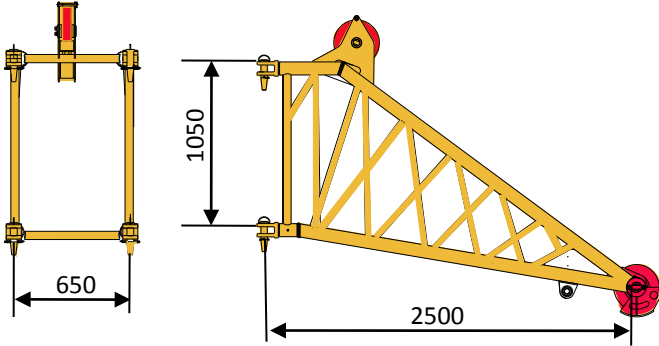


Counterweight	A	B	C	D	E	F
Size (L×W×H) m	2.11×0.44 ×0.587	2.5×1.139 ×0.235	2.5×1.139 ×0.045	2.5×1.139 ×0.212	2.5×1.139 ×0.399	1.1×0.57 ×0.247
Weight	1.1	2.1	0.7	3.1	4.4	0.6

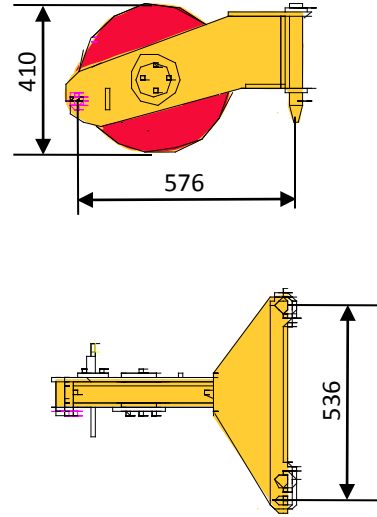
Working mode	12t	7.6t	4.5t	3.4 t	2.7t	2.1t
Combinations	A+B+C+D+E+F	A+B+C+D+F	A+B+C+F	B+C+F	B+F	B

# Transportation components dimension

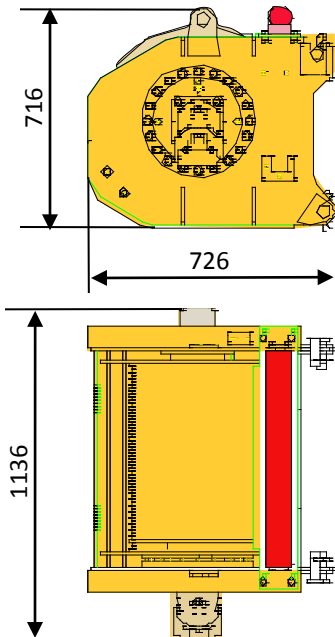
**435kg Independent jib head ( optional )**



**46kg Single top**

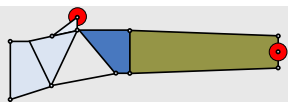


**648kg Auxiliary winch (rope included)**

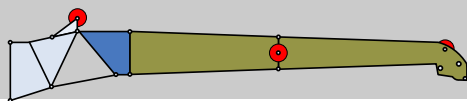


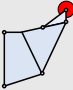


## Boom / Jib combinations

Jib – 9.2m



Jib – 16m



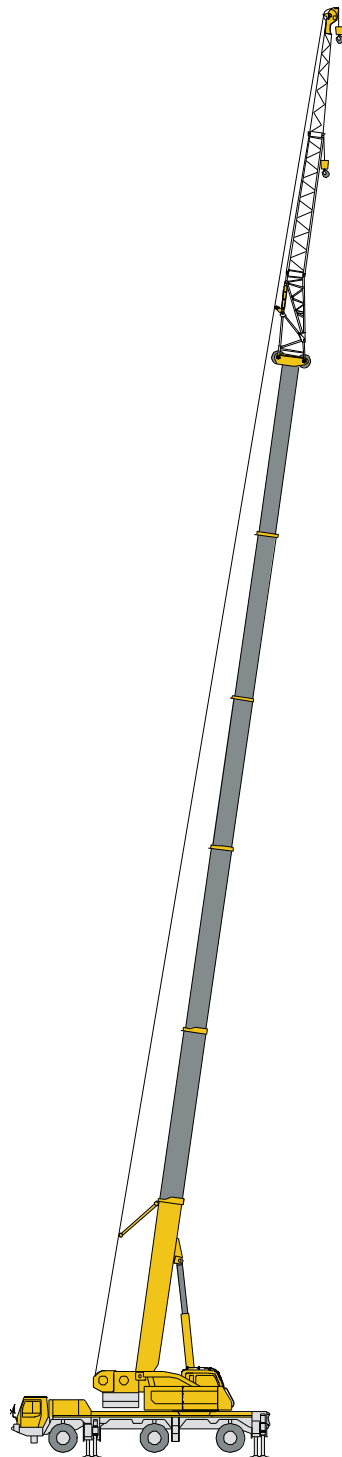
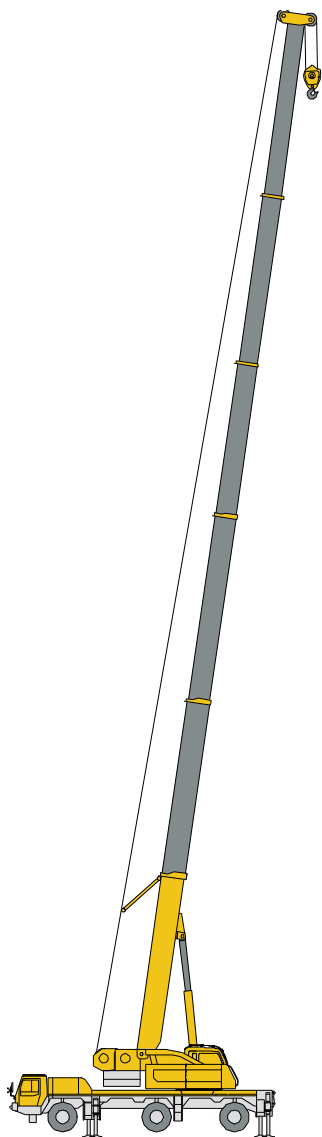
Component	Structure	Size ( L×W×H ) mm	Weight kg
Connection bracket		1100×650×1050	135.6
First jib section assembly		8760×650×580	485.4
Second jib section assembly		6300×250×360	240



## Boom / Jib combinations

T

J

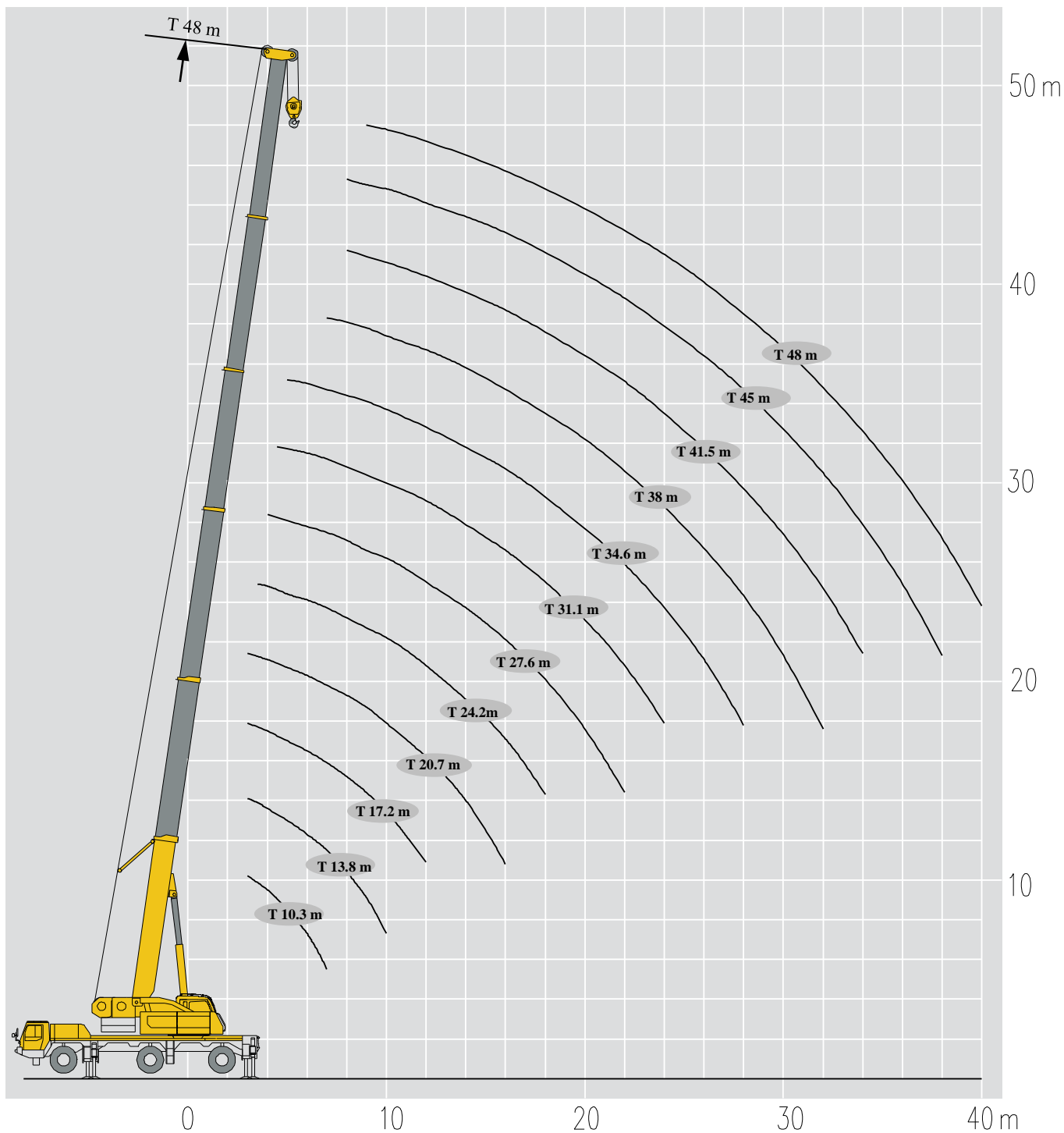


**Telescopic  
boom**

**Jib**

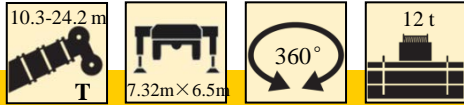
T : 10.3~48 m

T : 41.6~48 m  
J : 9.2~16 m



# Lifting capacities

T 10.3~24.2m

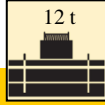
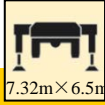


m	10.3 m							m
	10.3 m*	10.3 m	13.8 m	13.8 m	13.8 m	17.2 m	17.2 m	
2.1	60							2.1
3	54.6	42.5	42.3	41.5	40.5	41.5	40.5	3
3.5	49.9	42.5	42.2	41.0	40.0	41.0	40.0	3.5
4	44.5	40.7	41.4	40.2	39.0	38.5	37.9	4
4.5	39.8	37.5	38.0	36.9	35.0	35.0	34.9	4.5
5	36.4	34.5	35.0	35.2	33.0	33.0	33.3	5
6	31.6	29.0	29.8	30.0	29.0	29.8	29.8	6
7	26.5	24.3	24.5	24.8	25.3	26.0	25.5	7
8			20.5	21.0	21.5	21.6	22.5	8
9			17.5	18.0	18.3	17.7	18.5	9
10			15.0	15.4	15.7	14.7	15.8	10
12						10.8	11.5	12
Combinations		00000	01000	00100	00010	11000	01100	

m	17.2 m							m
	17.2 m	20.7 m	20.7 m	20.7 m	24.2 m	24.2 m	24.2 m	
3	28.1	35.0	27.6	23.9				3
3.5	26.4	35.0	25.8	23.0	27.4	30.0	23.7	3.5
4	24.8	35.0	23.9	22.1	24.5	30.0	22.8	4
4.5	23.4	33.5	21.5	21.2	22.4	29.0	22.0	4.5
5	22.1	31.5	20.3	20.3	21.4	28.0	21.2	5
6	19.9	28.5	18.2	19.1	19.4	27.2	19.9	6
7	18.1	25.5	16.5	17.8	17.8	24.7	18.7	7
8	16.6	21.5	15.1	16.3	16.3	22.0	17.7	8
9	15.4	18.5	13.8	15.1	14.9	18.5	16.3	9
10	14.4	15.9	12.7	14.0	13.8	15.7	15.1	10
12	12.1	11.1	11.0	12.2	11.2	11.5	12.2	12
14		8.5	8.9	9.9	8.6	9.0	9.7	14
16		6.7	7.1	8.0	6.8	7.1	8.1	16
18					5.5	5.8	6.7	18
Combinations	00110	11100	02100	00111	12100	11110	01111	组合

# Lifting capacities

T 27.6~48m

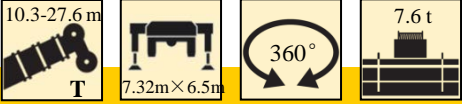


↔ m	27.6 m	27.6 m	27.6 m	31.1 m	31.1 m	31.1 m	34.6 m	34.6 m	↔ m
4	24.5	25.0	18.2						4
4.5	24.0	25.0	17.3	20.0	20.0	15.0			4.5
5	23.5	25.0	16.6	20.0	20.0	14.7	15.0	15.0	5
6	22.4	25.0	15.2	19.9	18.4	13.5	15.0	15.0	6
7	20.3	24.2	14.0	18.7	17.0	12.5	15.0	14.4	7
8	18.5	21.0	13.0	17.7	15.8	11.6	14.8	13.4	8
9	17.0	18.0	12.2	15.9	14.7	10.8	14.2	12.6	9
10	15.2	16.0	11.5	14.6	13.7	10.1	13.3	11.8	10
12	11.3	12.0	10.7	11.7	11.9	8.9	11.1	10.4	12
14	8.7	9.4	9.7	9.1	9.4	7.9	9.0	9.3	14
16	6.9	7.5	8.1	7.3	7.7	7.1	7.2	7.6	16
18	5.5	6.2	6.8	5.9	6.1	6.6	5.9	6.5	18
20	4.5	5.1	5.8	4.9	5.1	5.9	4.8	5.5	20
22	3.7	4.3	5.0	4.0	4.3	5.1	4.0	4.3	22
24				3.4	3.6	4.4	3.4	3.7	24
26							2.8	3.1	26
28							2.3	2.6	28
Combinations	21110	11111	01112	21111	12111	01122	22111	12211	

↔ m	34.6 m	38 m	38 m	38 m	41.5 m	41.5 m	45 m	48 m	↔ m
5	13.1								5
6	12.5								6
7	11.8	12.8	12.2	11.5					7
8	11.1	12.6	11.6	10.9	10.8	10.0	8.7		8
9	10.3	12.2	10.9	10.4	10.4	9.4	8.7	7.1	9
10	9.4	11.5	10.3	9.8	9.8	9.0	8.5	7.1	10
12	8.1	10.2	9.0	8.8	9.0	8.0	7.6	6.9	12
14	7.0	8.8	7.7	7.8	7.8	6.8	6.7	5.9	14
16	6.2	7.6	6.7	6.8	6.8	5.9	6.3	5.7	16
18	5.6	6.0	5.9	6.0	6.2	5.4	5.5	5.0	18
20	5.0	4.9	5.3	5.5	5.4	4.7	5.0	4.4	20
22	4.9	4.1	4.5	4.8	4.6	4.2	4.4	4.0	22
24	4.2	3.4	3.8	4.1	3.6	3.9	3.6	3.6	24
26	3.7	2.9	3.3	3.5	3.0	3.5	3.2	3.0	26
28	3.3	2.4	2.8	3.0	2.6	3.0	2.7	2.6	28
30		2.0	2.4	2.6	2.2	2.6	2.4	2.2	30
32		1.7	2.0	2.3	1.8	2.2	2.0	2.0	32
34					1.5	1.9	1.7	1.7	34
36							1.5	1.5	36
38							1.2	1.2	38
40								1.0	40
Combinations	01222	22211	12221	11222	22221	12222	22222	33333	

# Lifting capacities

T 10.3~27.6m

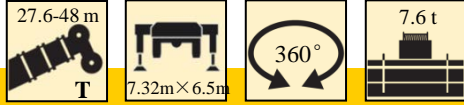


m	T							m
	10.3 m	13.8 m	13.8 m	13.8 m	17.2 m	17.2 m	17.2 m	
3	42.5	42.3	41.5	40.5	41.5	40.5	28.1	3
3.5	42.5	42.2	41.0	40.0	41.0	40.0	26.4	3.5
4	40.7	41.4	40.2	39.0	38.5	37.9	24.8	4
4.5	37.5	38.0	36.9	35.0	35.0	34.9	23.4	4.5
5	34.5	35.0	35.2	33.0	33.0	33.3	22.1	5
6	29.0	29.8	30.0	29.0	29.6	29.8	19.9	6
7	22.3	22.5	23.0	23.4	22.0	22.9	18.1	7
8		17.7	18.1	18.4	17.2	18.1	16.6	8
9		14.3	14.7	15.1	14.0	14.7	15.3	9
10		12.0	12.4	12.6	11.6	12.4	12.8	10
12					8.4	9.0	9.5	12
Combinations	00000	01000	00100	00010	11000	01100	00110	

m	T							m
	20.7 m	20.7 m	20.7 m	24.2 m	24.2 m	24.2 m	27.6 m	
3	35.0	27.6	23.9					3
3.5	35.0	25.8	23.0	27.4	30.0	23.7		3.5
4	35.0	23.9	22.1	24.5	30.0	22.8	24.5	4
4.5	33.5	21.5	21.2	22.4	29.0	22.0	24.0	4.5
5	31.5	20.3	20.3	21.4	28.0	21.2	23.5	5
6	28.5	18.2	19.1	19.4	27.2	19.9	22.4	6
7	22.4	16.5	17.8	17.8	22.9	18.7	20.3	7
8	17.6	15.1	16.3	16.3	18.1	17.7	17.8	8
9	14.3	13.8	15.1	14.3	14.7	15.7	14.4	9
10	11.9	12.4	13.4	12.0	12.4	13.2	12.1	10
12	8.6	9.0	10.0	8.7	9.0	9.9	8.7	12
14	6.6	6.9	7.8	6.7	6.9	7.7	6.7	14
16	5.0	5.4	6.3	5.1	5.4	6.2	5.2	16
18				4.0	4.4	5.0	4.1	18
20							3.2	20
22							2.6	22
Combinations	11100	02100	00111	12100	11110	01111	21110	

# Lifting capacities

T 27.6~48m

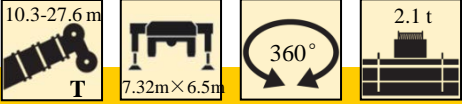


m	Lifting Capacity (m)							
	27.6 m	27.6 m	31.1 m	31.1 m	31.1 m	34.6 m	34.6 m	
4	25.0	18.2						4
4.5	25.0	17.3	20.0	20.0	15.0			4.5
5	25.0	16.6	20.0	20.0	14.7	15.0	15.0	5
6	25.0	15.2	19.9	18.4	13.5	15.0	15.0	6
7	23.5	14.0	18.7	17.0	12.5	15.0	14.4	7
8	18.6	13.0	17.7	15.8	11.6	14.8	13.4	8
9	15.2	12.2	14.9	14.7	10.8	14.2	12.6	9
10	12.8	11.5	12.4	12.7	10.1	12.4	11.8	10
12	9.5	10.2	9.2	9.4	8.9	9.1	9.5	12
14	7.3	8.0	7.0	7.3	7.9	7.0	7.3	14
16	5.8	6.5	5.5	5.8	6.6	5.5	5.9	16
18	4.8	5.3	4.5	4.7	5.4	4.5	4.8	18
20	3.8	4.5	3.6	3.8	4.6	3.5	3.9	20
22	3.1	3.7	2.9	3.0	3.9	2.9	3.1	22
24			2.3	2.6	3.3	2.3	2.6	24
26						1.8	2.1	26
28						1.4	1.7	28
Combinations	11111	01112	21111	12111	01122	22111	12211	

m	Lifting Capacity (m)								
	34.6 m	38 m	38 m	38 m	41.5 m	41.5 m	45 m	48 m	
5	13.1								5
6	12.5								6
7	11.8	12.8	12.2	11.5					7
8	11.1	12.6	11.6	10.9	10.8	10.0	8.7		8
9	10.3	12.2	10.9	10.4	10.4	9.4	8.7	7.1	9
10	9.4	11.5	10.3	9.8	9.8	9.0	8.5	7.1	10
12	8.1	9.2	9.0	8.8	9.0	8.0	7.6	6.9	12
14	7.0	7.1	7.5	7.8	7.3	6.8	6.7	5.9	14
16	6.2	5.6	6.0	6.3	5.8	5.9	6.0	5.7	16
18	5.4	4.6	4.8	5.1	4.7	5.1	4.8	4.8	18
20	4.6	3.6	4.0	4.3	3.8	4.2	4.0	4.0	20
22	3.9	2.9	3.3	3.6	3.1	3.5	3.3	3.3	22
24	3.2	2.4	2.8	3.0	2.6	2.9	2.8	2.8	24
26	2.8	1.9	2.3	2.6	2.1	2.5	2.3	2.3	26
28	2.4	1.5	1.9	2.1	1.7	2.1	1.9	1.9	28
30		1.2	1.5	1.8	1.3	1.7	1.5	1.5	30
32			1.2	1.5	1.0	1.4	1.2	1.2	32
34						1.2	1.0	1.0	34
Combinations	01222	22211	12221	11222	22221	12222	22222	33333	

# Lifting capacities

T 10.3~27.6m



m	T 10.3~27.6m							m
	10.3 m	13.8 m	13.8 m	13.8 m	17.2 m	17.2 m	17.2 m	
3	42.5	42.3	41.5	40.5	41.5	40.5	28.1	3
3.5	42.5	42.2	41.0	40.0	41.0	40.0	26.4	3.5
4	40.7	41.4	40.2	39.0	38.5	37.9	24.8	4
4.5	37.5	38.0	36.9	35.0	35.0	34.9	23.4	4.5
5	34.5	34.9	35.2	33.0	33.0	33.3	22.1	5
6	23.3	23.5	23.9	24.4	22.9	23.9	19.9	6
7	17.2	17.3	17.8	18.1	16.8	17.8	18.1	7
8		13.5	13.9	14.3	13.0	13.9	14.4	8
9		10.8	11.2	11.6	10.5	11.2	11.8	9
10		8.9	9.3	9.6	8.6	9.3	9.8	10
12					5.8	6.6	7.0	12
Combinations	00000	01000	00100	00010	11000	01100	00110	

m	T 10.3~27.6m							m
	20.7 m	20.7 m	20.7 m	24.2 m	24.2 m	24.2 m	27.6 m	
3	35.0	27.6	23.9					3
3.5	35.0	25.8	23.0	27.4	30.0	23.7		3.5
4	35.0	23.9	22.1	24.5	28.0	22.8	24.5	4
4.5	33.5	21.5	21.2	22.4	27.0	22.0	24.0	4.5
5	31.5	20.3	20.3	21.4	25.0	21.2	23.5	5
6	23.4	18.2	19.1	19.4	23.9	19.9	22.4	6
7	17.2	16.5	17.8	17.3	17.8	18.7	17.4	7
8	13.4	13.9	15.0	13.5	13.9	14.8	13.6	8
9	10.7	11.2	12.3	10.8	11.2	12.2	10.9	9
10	8.8	9.2	10.3	8.9	9.3	10.2	9.0	10
12	6.1	6.6	7.5	6.2	6.6	7.4	6.3	12
14	4.4	4.8	5.7	4.5	4.8	5.6	4.5	14
16	3.1	3.5	4.5	3.2	3.5	4.3	3.3	16
18				2.4	2.7	3.4	2.4	18
20							1.7	20
22							1.2	22
Combinations	11100	02100	00111	12100	11110	01111	21110	组合

# Lifting capacities

T 27.6~48m

m	27.6-48m T							m
	27.6 m	27.6 m	31.1 m	31.1 m	31.1 m	34.6 m	34.6 m	
4	25.0	18.2						4
4.5	24.0	17.3	20.0	20.0	15.0			4.5
5	22.0	16.6	20.0	20.0	14.7	15.0	15.0	5
6	20.0	15.2	19.9	18.4	13.5	15.0	15.0	6
7	18.3	14.0	18.0	17.0	12.5	15.0	14.4	7
8	14.3	13.0	14.1	14.3	11.6	14.0	13.4	8
9	11.7	12.2	11.4	11.6	10.8	11.3	11.7	9
10	9.7	10.5	9.4	9.7	10.1	9.4	9.8	10
12	7.0	7.7	6.7	6.9	7.9	6.7	7.0	12
14	5.2	5.9	4.8	5.1	6.0	4.8	5.2	14
16	3.9	4.6	3.7	3.9	4.8	3.6	4.0	16
18	3.0	3.7	2.8	2.9	3.8	2.8	3.0	18
20	2.4	2.9	2.1	2.3	3.1	2.1	2.4	20
22	1.8	2.4	1.5	1.8	2.6	1.5	1.8	22
24			1.1	1.3	2.1	1.1	1.4	24
26							1.0	26
Combinations	11111	01112	21111	12111	01122	22111	12211	

m	27.6-48m T								m
	34.6 m	38 m	38 m	38 m	41.5 m	41.5 m	45 m	48 m	
5	13.1								5
6	12.5								6
7	11.8	12.8	12.2	11.5					7
8	11.1	12.6	11.6	10.9	10.8	10.0	8.7		8
9	10.3	11.4	10.9	10.4	10.4	9.4	8.7	7.1	9
10	9.4	9.5	10.0	9.8	9.7	9.0	8.5	7.1	10
12	7.9	6.7	7.2	7.5	6.9	7.4	7.2	6.9	12
14	6.0	4.9	5.4	5.7	5.1	5.6	5.3	5.4	14
16	4.8	3.7	4.1	4.5	3.9	4.4	4.1	4.1	16
18	3.8	2.9	3.2	3.5	3.0	3.4	3.2	3.2	18
20	3.0	2.2	2.6	2.8	2.3	2.8	2.6	2.6	20
22	2.6	1.6	2.0	2.3	1.8	2.2	2.0	2.0	22
24	2.1	1.1	1.5	1.8	1.3	1.7	1.5	1.5	24
26	1.7		1.1	1.4	1.0	1.3	1.1	1.1	26
28	1.4			1.1		1.0			28
Combinations	01222	22211	12221	11222	22221	12222	22222	33333	



# Lifting capacities

T 10.3~27.6m

m	10.3-27.6 m T							m
	10.3 m	13.8 m	13.8 m	13.8 m	17.2 m	17.2 m	17.2 m	
3	42.5	42.3	41.0	40.5	41.5	40.5	28.1	3
3.5	40.0	41.0	40.2	39.0	38.5	37.5	26.4	3.5
4	37.5	38.0	36.9	35.0	35.0	34.5	24.8	4
4.5	32.0	32.2	32.5	32.6	32.0	32.0	23.4	4.5
5	27.5	27.7	28.1	28.6	27.2	28.1	22.1	5
6	19.6	19.7	20.1	20.5	19.3	20.1	19.9	6
7	15.0	15.0	15.5	15.7	14.7	15.5	16.0	7
8		12.0	12.3	12.7	11.6	12.3	12.8	8
9		9.9	10.1	10.5	9.4	10.1	10.6	9
10		8.2	8.5	8.8	7.9	8.5	8.9	10
12					5.6	6.2	6.6	12
Combinations	00000	01000	00100	00010	11000	01100	00110	

m	10.3-27.6 m T							m
	20.7 m	20.7 m	20.7 m	24.2 m	24.2 m	24.2 m	27.6 m	
3	35.0	27.6	23.9					3
3.5	35.0	25.8	23.0	27.4	28.0	23.7		3.5
4	35.0	23.9	22.1	24.5	26.0	22.8	24.5	4
4.5	32.0	21.5	21.2	22.4	24.0	22.0	24.0	4.5
5	27.6	20.3	20.3	21.4	22.0	21.2	23.5	5
6	19.6	18.2	19.1	19.4	20.1	19.9	19.8	6
7	15.0	15.4	16.4	15.0	15.5	16.3	15.1	7
8	11.9	12.3	13.3	12.0	12.3	13.1	12.1	8
9	9.8	10.1	11.1	9.8	10.1	10.9	9.9	9
10	8.2	8.5	9.4	8.2	8.5	9.3	8.2	10
12	5.9	6.2	7.1	6.0	6.2	6.9	6.0	12
14	4.4	4.7	5.5	4.4	4.8	5.4	4.5	14
16	3.3	3.7	4.4	3.4	3.7	4.3	3.4	16
18				2.6	2.9	3.5	2.6	18
20							2.0	20
22							1.5	22
Combinations	11100	02100	00111	12100	11110	01111	21110	

# Lifting capacities

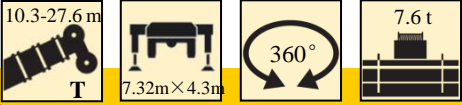
T 27.6~48m

m	27.6-48m							m
	27.6 m	27.6 m	31.1 m	31.1 m	31.1 m	34.6 m	34.6 m	
4	24.0	18.2						4
4.5	22.0	17.3	20.0	20.0	15.0			4.5
5	20.0	16.6	20.0	20.0	14.7	15.0	15.0	5
6	18.0	15.2	19.9	18.4	13.5	14.0	15.0	6
7	15.9	14.0	15.6	15.8	12.5	13.0	14.4	7
8	12.8	13.0	12.5	12.7	11.6	12.4	12.8	8
9	10.5	11.2	10.3	10.5	10.8	10.2	10.5	9
10	8.8	9.5	8.6	8.8	9.6	8.6	8.9	10
12	6.5	7.1	6.4	6.5	7.3	6.3	6.6	12
14	5.1	5.6	4.8	5.0	5.8	4.8	5.1	14
16	4.0	4.5	3.7	3.9	4.7	3.7	4.0	16
18	3.1	3.7	3.0	3.1	3.8	2.9	3.2	18
20	2.6	3.1	2.3	2.5	3.1	2.3	2.6	20
22	2.0	2.6	1.8	2.0	2.6	1.8	2.0	22
24			1.4	1.6	2.2	1.4	1.6	24
26						1.0	1.3	26
28							1.0	28
Combinations	11111	01112	21111	12111	01122	22111	12211	

m	27.6-48m								m
	34.6 m	38 m	38 m	38 m	41.5 m	41.5 m	45 m	48 m	
5	13.1								5
6	12.5								6
7	11.8	12.8	12.2	11.5					7
8	11.1	12.5	11.6	10.9	10.8	10.0	8.7		8
9	10.3	10.3	10.7	10.4	10.4	9.4	8.7	7.1	9
10	9.4	8.7	9.1	9.4	8.8	9.0	8.5	7.1	10
12	7.3	6.4	6.7	7.0	6.5	7.0	6.7	6.7	12
14	5.7	4.8	5.2	5.4	5.0	5.4	5.2	5.2	14
16	4.6	3.8	4.2	4.3	3.9	4.3	4.2	4.2	16
18	3.8	3.0	3.3	3.6	3.1	3.5	3.3	3.3	18
20	3.1	2.4	2.7	2.9	2.6	2.9	2.7	2.7	20
22	2.6	1.9	2.2	2.4	2.0	2.4	2.2	2.2	22
24	2.2	1.4	1.8	2.0	1.6	2.0	1.8	1.8	24
26	1.9	1.1	1.4	1.7	1.3	1.6	1.4	1.4	26
28	1.6		1.2	1.4		1.3	1.1	1.1	28
30				1.1		1.0			30
Combinations	01222	22211	12221	11222	22221	12222	22222	33333	

# Lifting capacities

T 10.3~27.6m

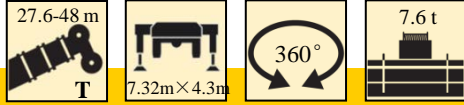


m	T							m
	10.3 m	13.8 m	13.8 m	13.8 m	17.2 m	17.2 m	17.2 m	
3	26.0	26.0	27.0	28.0	26.0	27.0	28.1	3
3.5	25.0	25.0	26.0	27.0	25.0	26.0	26.4	3.5
4	24.0	24.0	25.0	25.5	24.0	25.0	24.8	4
4.5	23.0	23.0	24.0	24.5	23.0	24.0	23.4	4.5
5	22.4	22.6	23.0	23.5	22.1	23.0	22.1	5
6	15.8	16.0	16.3	16.7	15.6	16.3	16.9	6
7	11.9	12.1	12.4	12.8	11.6	12.4	12.9	7
8		9.5	9.9	10.1	9.2	9.9	10.3	8
9		7.7	8.0	8.2	7.3	8.0	8.5	9
10		6.4	6.6	6.9	6.0	6.6	7.1	10
12					4.2	4.8	5.2	12
combination	00000	01000	00100	00010	11000	01100	00110	

m	T							m
	20.7 m	20.7 m	20.7 m	24.2 m	24.2 m	24.2 m	27.6 m	
3	26.0	27.6	23.9					3
3.5	25.0	25.8	23.0	27.4	26.0	23.7		3.5
4	24.0	23.9	22.1	24.5	25.0	22.8	24.0	4
4.5	23.0	21.5	21.2	22.4	22.0	22.0	23.0	4.5
5	22.5	20.3	20.3	21.4	20.0	21.2	22.6	5
6	15.9	16.3	17.4	16.0	16.3	17.3	16.0	6
7	12.0	12.4	13.4	12.1	12.4	13.3	12.2	7
8	9.4	9.8	10.8	9.5	9.9	10.6	9.6	8
9	7.7	8.0	8.9	7.7	8.0	8.8	7.7	9
10	6.3	6.6	7.5	6.4	6.6	7.4	6.4	10
12	4.4	4.8	5.5	4.4	4.8	5.4	4.5	12
14	3.1	3.5	4.3	3.2	3.5	4.2	3.2	14
16	2.3	2.6	3.3	2.3	2.6	3.2	2.4	16
18				1.7	2.0	2.6	1.7	18
20							1.2	20
Combinations	11100	02100	00111	12100	11110	01111	21110	

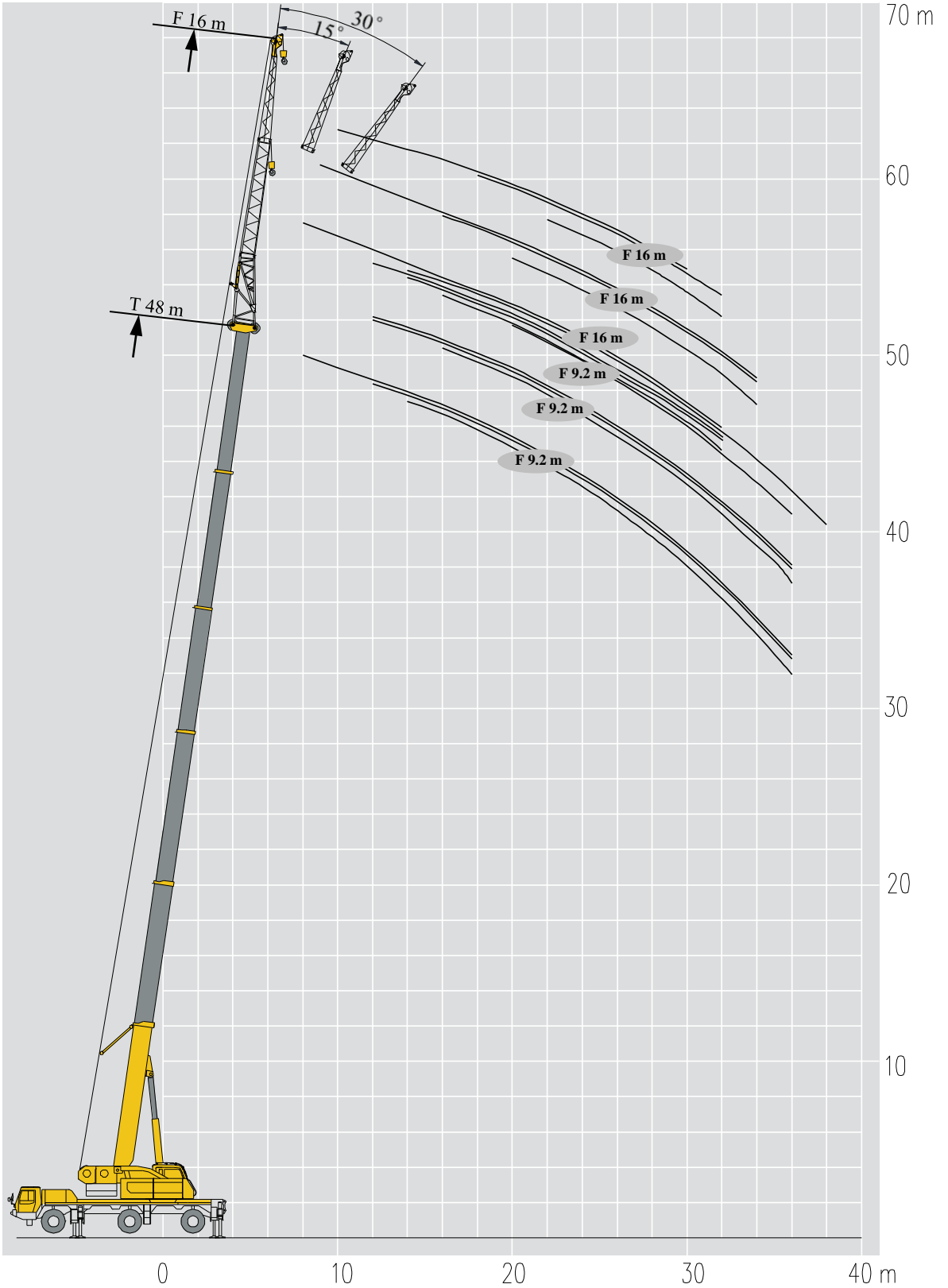
# Lifting capacities

T 27.6~48m



m	27.6 m							m
	27.6 m	27.6 m	31.1 m	31.1 m	31.1 m	34.6 m	34.6 m	
4	24.0	18.2						4
4.5	22.0	17.3	20.0	20.0	15.0			4.5
5	20.0	16.6	20.0	20.0	14.7	15.0	15.0	5
6	16.8	15.2	16.5	16.7	13.5	14.0	15.0	6
7	12.8	13.6	12.6	12.8	12.5	12.5	12.9	7
8	10.3	11.0	9.9	10.2	11.1	9.9	10.3	8
9	8.4	9.1	8.2	8.3	9.2	8.1	8.4	9
10	7.1	7.7	6.7	7.0	7.7	6.7	7.1	10
12	5.1	5.7	4.8	5.1	5.8	4.8	5.1	12
14	3.8	4.4	3.6	3.8	4.5	3.6	3.8	14
16	2.9	3.5	2.7	2.9	3.6	2.6	3.0	16
18	2.2	2.8	2.0	2.2	2.9	2.0	2.3	18
20	1.7	2.2	1.5	1.7	2.4	1.4	1.8	20
22	1.3	1.8	1.1	1.3	2.0	1.1	1.4	22
24					1.6		1.0	24
combi nation	11111	01112	21111	12111	01122	22111	12211	combi nation

m	34.6 m								m
	34.6 m	38 m	38 m	38 m	41.5 m	41.5 m	45 m	48 m	
5	13.1								5
6	12.5								6
7	11.8	12.7	12.2	11.5					7
8	11.1	10.0	10.5	10.7	10.2	10.0	8.7		8
9	9.2	8.2	8.6	8.8	8.3	8.8	8.6	7.1	9
10	7.7	6.8	7.2	7.5	7.0	7.4	7.2	7.1	10
12	5.8	4.9	5.3	5.5	5.1	5.4	5.3	5.3	12
14	4.5	3.7	4.0	4.3	3.8	4.2	4.0	4.0	14
16	3.6	2.7	3.1	3.3	2.9	3.2	3.1	3.1	16
18	2.9	2.1	2.4	2.6	2.2	2.6	2.4	2.4	18
20	2.4	1.5	1.9	2.1	1.7	2.0	1.9	1.9	20
22	2.0	1.1	1.4	1.7	1.3	1.6	1.4	1.4	22
24	1.5		1.1	1.4		1.3	1.1	1.1	24
26	1.3			1.0		1.0			26
28	1.0								28
combi nation	01222	22211	12221	11222	22221	12222	22222	33333	combi nation



# T Lifting capacities

J 9.2m

m	10.3-38 m T			9.2 m F			7.32m×6.5m			360°			12 t		
	10.3 m			34.6 m			38 m			m					
	0°	15°	30°	0°	15°	30°	0°	15°	30°	0°	15°	30°			
3	7.9												3		
3.5	7.7	6.8											3.5		
4	7.4	6.7											4		
4.5	7.1	6.7											4.5		
5	6.8	6.7											5		
6	6.3	6.2	5.2										6		
7	5.8	5.6	5	5									7		
8	5.2	5.2	4.8	5									8		
9	4.7	4.6	4.2	5	5								9		
10	4.2	4	3.8	5	5		5						10		
12	3.3	3.2	3	5	5	5	5	5.0	4.3				12		
14	2.7	2.6	2.5	5	5	5	5	4.6	4.1				14		
16				5	5	4.9	4.6	4.1	3.9				16		
18				5	4.9	4.7	4.2	3.9	3.5				18		
20				4.7	4.4	4.2	3.5	3.5	3.1				20		
22				3.9	3.9	3.7	3.2	3.1	2.9				22		
24				3.5	3.4	3.4	2.8	2.7	2.7				24		
26				3	3.1	3	2.4	2.4	2.4				26		
28				2.5	2.7	2.7	2.2	2.1	2				28		
30				2.1	2.2	2.3	2	2	2				30		
32				1.8	1.9	2	1.7	1.8	1.7				32		
34				1.5	1.6		1.5	1.5	1.5				34		
36				1.2	1.3		1.2	1.3					36		
38							1	1.1					38		
combi nation	00000			22111			22211			combi nation					

m	41.6-48 m T			9.2 m F			7.32m×6.5m			360°			12 t		
	41.6 m			45.1 m			48 m			m					
	0°	15°	30°	0°	15°	30°	0°	15°	30°	0°	15°	30°			
10	5												10		
12	5	4.8		3.9	3.6		3.4						12		
14	4.8	4.6	4.2	3.8	3.5		3.3	3.4					14		
16	4.3	4.2	4	3.7	3.3	3.2	3.3	3.3	3				16		
18	3.8	3.6	3.5	3.2	3.1	2.9	3	2.9	2.7				18		
20	3.3	3.2	3.2	2.8	2.7	2.6	2.7	2.5	2.4				20		
22	2.8	2.8	2.7	2.6	2.5	2.3	2.2	2.2	2.1				22		
24	2.6	2.4	2.4	2.3	2.2	2.1	2	1.9	1.8				24		
26	2.2	2.1	2.1	2	2	2	1.7	1.6	1.5				26		
28	2	2	1.9	1.7	1.6	1.5	1.5	1.4	1.4				28		
30	1.7	1.7	1.6	1.5	1.4	1.4	1.3	1.3	1.2				30		
32	1.5	1.5	1.5	1.4	1.3	1.2	1	1	1				32		
34	1.4	1.3	1.3	1.1	1.1	1.1							34		
36	1.1	1.1	1.1	1	1	1							36		
combi nation	22221			22222			33333			combi nation					

# T Lifting capacities

J 9.2m

m	10.3-38 m T			9.2 m F			7.32m×6.5m			360°			7.6 t			m
	10.3 m			34.6 m			38 m									
	0°	15°	30°	0°	15°	30°	0°	15°	30°	0°	15°	30°				
3	7.9												3			
3.5	7.7	6.8											3.5			
4	7.4	6.7											4			
4.5	7.1	6.7											4.5			
5	6.8	6.7											5			
6	6.3	6.2	5.2										6			
7	5.8	5.6	5	5									7			
8	5.2	5.2	4.8	5									8			
9	4.7	4.6	4.2	5	5								9			
10	4.2	4	3.8	5	5		5						10			
12	3.3	3.2	3	5	5	5	5	5.0	4.3				12			
14	2.7	2.6	2.5	5	5	5	5	4.6	4.1				14			
16				5	5	4.9	4.6	4.1	3.9				16			
18				4.9	4.9	4.7	4.2	3.9	3.5				18			
20				3.9	4.2	4.2	3.5	3.5	3.1				20			
22				3.2	3.4	3.6	3.2	3.1	2.9				22			
24				2.6	2.8	3	2.6	2.7	2.7				24			
26				2.1	2.3	2.4	2.1	2.3	2.4				26			
28				1.7	1.9	2	1.7	1.9	2				28			
30				1.4	1.5	1.6	1.4	1.5	1.6				30			
32				1.1	1.2	1.3	1.1	1.2	1.3				32			
combination	00000			22111			22211			combi nation						

m	41.6-48 m T			9.2 m F			7.32m×6.5m			360°			7.6 t			m
	41.6 m			45.1 m			48 m									
	0°	15°	30°	0°	15°	30°	0°	15°	30°	0°	15°	30°				
10	5												10			
12	5	4.8		3.9	3.6		3.4						12			
14	4.8	4.6	4.2	3.8	3.5	0	3.3	3.4					14			
16	4.3	4.2	4	3.7	3.3	3.2	3.3	3.3	3				16			
18	3.8	3.6	3.5	3.2	3.1	2.9	3	2.9	2.7				18			
20	3.3	3.2	3.2	2.8	2.7	2.6	2.7	2.5	2.4				20			
22	2.8	2.8	2.7	2.6	2.5	2.3	2.2	2.2	2.1				22			
24	2.6	2.4	2.4	2.3	2.2	2.1	2	1.9	1.8				24			
26	2.2	2.1	2.1	2	2	2	1.7	1.6	1.5				26			
28	1.8	2	1.9	1.7	1.6	1.5	1.5	1.4	1.4				28			
30	1.4	1.6	1.6	1.5	1.4	1.4	1.3	1.3	1.2				30			
32	1.1	1.3	1.4	1.3	1.3	1.2	1	1	1				32			
34		1	1.1	1	1.1	1.1							34			
combination	22221			22222			33333			combi nation						

# T Lifting capacities

# J 16m

m	10.3-38 m T			16 m F			7.32m×6.5m			360°			12 t			m
	10.3 m			34.6 m			38 m									
	0°	15°	30°	0°	15°	30°	0°	15°	30°	0°	15°	30°				
3	4.1												3			
3.5	4.1												3.5			
4	4												4			
4.5	4												4.5			
5	3.9												5			
6	3.7												6			
7	3.6												7			
8	3.4			3.9									8			
9	3.2	3.2		3.8									9			
10	3.1	3		3.8									10			
12	2.8	2.6	2.4	3.7	3.1		3.3						12			
14	2.6	2.5	2.3	3.5	3		3.2						14			
16	2.3	2.2	2	3.4	2.9	2.4	3.2	2.8					16			
18	2	2	1.8	3.3	2.8	2.4	3.1	2.6					18			
20	1.7	1.8	1.6	3.2	2.7	2.3	2.8	2.6	2.3				20			
22				3	2.6	2.3	2.7	2.5	2.2				22			
24				2.9	2.5	2.2	2.4	2.4	2.1				24			
26				2.7	2.4	2.2	2.1	2	2				26			
28				2.5	2.4	2.1	2	1.9	1.9				28			
30				2.3	2.3	2.1	1.9	1.9	1.7				30			
32				2	2.1	2.1	1.6	1.5	1.5				32			
34				1.7	1.9	1.9		1.3	1.3				34			
36				1.4	1.6	1.7		1.1	1.1				36			
38				1.2	1.3	1.4		1					38			
40					1.1								40			
combination	00000			22111			22211			combination						

m	41.6-48 m T			16 m F			7.32m×6.5m			360°			12 t			m
	41.6 m			45.1 m			48 m									
	0°	15°	30°	0°	15°	30°	0°	15°	30°	0°	15°	30°				
12	3			2.6			2.3						12			
14	2.8			2.6			2.2						14			
16	2.8	2.6		2.5	2.4		2.2						16			
18	2.8	2.5		2.4	2.3		2.2	2.2					18			
20	2.6	2.5	2.2	2.3	2.2	2	2.1	2.1					20			
22	2.4	2.4	2.2	2.2	2.2	2	2	2.1	2				22			
24	2.3	2.3	2.1	1.9	2	1.9	1.7	1.7	1.7				24			
26	2.1	1.9	1.9	1.7	1.7	1.7	1.5	1.5	1.4				26			
28	1.8	1.8	1.8	1.5	1.5	1.5	1.4	1.4	1.3				28			
30	1.5	1.5	1.5	1.4	1.4	1.4	1.1	1.1	1.1				30			
32	1.4	1.4	1.3	1.2	1.2	1.3		1	1				32			
34		1.2	1.2	1.1	1.1	1.1							34			
36		1.1	1.1										36			
38		1											38			
40		0.8											40			
combination	22221			22222			33333			combination						



# T Lifting capacities

# J 16m

m	10.3-38 m T			16 m F			7.32m×6.5m			360°			7.6 t			m
	10.3 m									34.6 m			38 m			
	0°	15°	30°	0°	15°	30°	0°	15°	30°	0°	15°	30°	0°	15°	30°	
3	4.1															3
3.5	4.1															3.5
4	4															4
4.5	4															4.5
5	3.9															5
6	3.7															6
7	3.6															7
8	3.4						3.9									8
9	3.2	3.2					3.8									9
10	3.1	3					3.8									10
12	2.8	2.6	2.4				3.7	3.1					3.3			12
14	2.6	2.5	2.3				3.5	3					3.2			14
16	2.3	2.2	2				3.4	2.9	2.4				3.2	2.8		16
18	2	2	1.8				3.3	2.8	2.4				3.1	2.6		18
20	1.7	1.8	1.6				3.2	2.7	2.3				2.8	2.6	2.3	20
22							3	2.6	2.3				2.7	2.5	2.2	22
24							2.9	2.5	2.2				2.4	2.4	2.1	24
26							2.4	2.4	2.2				2.1	2	2	26
28							1.9	2.2	2.1				1.9	1.9	1.9	28
30							1.6	1.8	2.1				1.6	1.8	1.7	30
32							1.3	1.5	1.7				1.2	1.5	1.5	32
34							1	1.2	1.4					1.2	1.3	34
36								1	1.1						1.1	36
combination	00000						22111			22211			combination			

m	41.6-48 m T			16 m F			7.32m×6.5m			360°			7.6 t			m
	41.6 m									45.1 m			48 m			
	0°	15°	30°	0°	15°	30°	0°	15°	30°	0°	15°	30°	0°	15°	30°	
12	3						2.6						2.3			12
14	2.8						2.6						2.2			14
16	2.8	2.6					2.5	2.4					2.2			16
18	2.8	2.5					2.4	2.3					2.2	2.2		18
20	2.6	2.5	2.2				2.3	2.2	2				2.1	2.1		20
22	2.4	2.4	2.2				2.2	2.2	2				2	2.1	2	22
24	2.3	2.3	2.1				1.9	2	1.9				1.7	1.7	1.7	24
26	2.1	1.9	1.9				1.7	1.7	1.7				1.5	1.5	1.4	26
28	1.8	1.8	1.8				1.5	1.5	1.5				1.4	1.4	1.3	28
30	1.5	1.5	1.5				1.4	1.4	1.4				1.1	1.1	1.1	30
32	1.3	1.4	1.3				1.2	1.2	1.3					1	1	32
34		1.2	1.2				1.1	1.1	1.1							34
36		1	1.1													36
combination	22221						22222			33333			combination			

## Table of Main Technical Parameters















Category	Item	Unit	参数 Parameter	
Dimensions	Outline size ( length×width×height )	mm	11880×2550×3755(14.0R25) 11880×2550×3805(16.0R25) 11880×2700×3805(20.5R25)	
	Axle load	mm	2950+1650	
	Track ( Front/ Rear )	mm	2150(14.0R25) 2084(16.0R25) 2155(20.5R25)	
	Front/ Rear overhang	mm	3080/2060	
	Front/ Rear extension	mm	1430/710	
Weight	Total vehicle mass in travel configuration		kg	36000
		1st axle	kg	12000
		2nd axle	kg	12000
		3rd axle	kg	12000
Power	Engine model		—	OM470LA
	Engine rated power/ rpm		kW/(r/min)	280/1700
	Max. net power/ rpm		kW/(r/min)	280/1700
	Max. output torque/ rpm		N.m/(r/min)	1900/1300
Travel	Max. travel speed		km/h	≥85
	Min. travel speed		km/h	3
	Min. turning diameter		m	16.0R25/20.5R25)
	Min. ground clearance		mm	330(14.0R25) 380(16.0R25/20.5R25)
	Approach angle		°	19(14.0R25) 20(16.0R25/20.5R25)
	Departure angle		°	21(14.0R25) 23(16.0R25/20.5R25)
	Braking distance (at 30 km/h )		m	≤10
	Max. grade ability		%	70(14.0R25) 63(16.0R25/20.5R25)
	百公里油耗 Fuel consumption per 100 km		L	49
Noise	Exterior noise level		dB(A)	≤82
	Noise level at seated position		dB(A)	≤90

## Table of Main Technical Parameters



Category	Item		Unit	Parameter	
Main performance	Max. total rated lifting capacity		t	60	
	Min. rated working radius		m	2.1	
	Turning radius at turntable tail	Counterweight	mm	3750	
		Auxiliary winch	mm	4250	
	Max. load moment	Base boom	kN.m	1858	
		Fully-extended boom	kN.m	894	
		Fully-extended boom + Jib	kN.m	529	
	Outrigger span	Longitudinal	m	7.32	
		Lateral	m	6.5	
	Hoist height	Base boom	m	10.2	
		Fully-extended boom	m	48	
		Fully-extended boom + Jib	m	63	
	Boom length	Base boom	m	10.3	
		Fully-extended boom	m	48	
Fully-extended boom + Jib		m	64		
Jib offset angle		°	0、15、30		
Working speed	Boom raising time		s	≤38	
	Boom fully extended time		s	≤310	
	Max. slewing speed		r/min	≥1.5	
	Outrigger extending and retracting time	Outrigger beam	Retracting	s	≤20
			Extending	s	≤20
		Outrigger jack	Retracting	s	≤60
			Extending	s	≤30
Hoisting speed (single line, 4th layer, no load)	Main winch	m/min	≥135		
	Auxiliary winch	m/min	≥135		
Noise	Exterior noise level		dB ( A )	≤109	
	Noise level at seated position		dB ( A )	≤80	

## Description of symbols

### General symbols

	Outriggers		Axle
	Radius		Driving speed
	Boom position		Gradeability
	Boom length		Tires
	Hook block		Counterweight
	360° rotation		superstructure
	Winch		Chassis

### Crane specific symbols

	Boom		Jib
--	------	---	-----

## Notes

1. The total rated loads given in the rated load charts are the maximum lifting capacity when the crane is set up on firm and level ground, which includes the weight of the hook block and slings. The weight of above-mentioned devices should be deducted to correctly calculate the load weight.
2. The working radius shown in the rated load charts is the radius when the load is lifted off the ground, and it is the actual value including loaded boom deflection.
3. A lifting operation is permissible only when the wind force is below grade 5 (instantaneous wind speed is 14.1/s, wind pressure is 125N/m<sup>2</sup>).
4. Before beginning lifting operation, the operator should know the weight of the load to be lifted and its working range, and then select proper working conditions. Never operate the crane beyond the limit shown in the chart. Use the lower value from the chart when the boom length or working radius is between the range of values.
5. Observe the boom angle limit. Never operate the crane with the boom angle beyond the recommended limit even if a load is not being carried. Otherwise, the crane will tip.
6. The boom length given in the rated load charts should accord with the telescoping code of boom sections .



## **CRANES AUSTRALIA**

**KERRY FULLBROOK**

**TECHNICAL SALES**

**MOBILE: 0448 373 370**

**EMAIL: [KERRY@XCMGCRANESAUS.COM.AU](mailto:KERRY@XCMGCRANESAUS.COM.AU)**

**HEAD OFFICE : 415 SOUTH GIPPSLAND**

**HWY, DANDENONG STH, VIC 3175**

**PH: 9799 8699**

**[WWW.XCMGCRANESAUSTRALIA.COM.AU](http://WWW.XCMGCRANESAUSTRALIA.COM.AU)**